



TO THE DESIGNER

TFC CANOPY is pleased to present this specification guide to assist you in the selection of the appropriate TFC system for your project.

You will discover that we have many different systems from a single source, allowing you the freedom of design using more than one system and a variety of finishes

Whether your projects call for flat, bent, curved, compound shapes, painted stainless, stone, caulk or dry joint materials, TFC has a system or combination of systems to meet your individual project needs.

TFC has the capability to service all of North America and areas beyond. Our facility is equipped with state-of-the-art technology to ensure unparalleled quality and service from manufacturing to installing the product.

This guide illustrates some of the basic details, abbreviated systems and suggested specification, all of which are available on disc to assist you in your design. We would like to meet with you personally to resolve any questions or concerns, and help you design an optimal project.

Please contact us at your earliest convenience. We have many qualified professionals on staff to assist you in your design and engineering needs.

Respectfully,
TFC Canopy, a Division of Centurion Industries, Inc.

Bob Patterson
President, TFC Canopy



TFC SERIES 2100
ROUTE AND RETURN 1 3/4" TESTED DRY GASKET SYSTEM
(General Specification)

DESCRIPTION

ALPOLIC® aluminum composite material (ACM) is composed of two thin sheets of aluminum continuously bonded under pressure to both sides of a thermo-plastic core.

FEATURES

- Superior Flatness
- Rigidity
- Thermal Stability
- Virtually Endless Palette Of Colors
- High Strength to Weight Ratio
- Lightweight and Flexible
- Panels can be Bent or Curved
- Radius Column Covers

MATERIAL / FINISH OPTIONS

- 3-mm, 4-mm, and 6-mm material thickness
- Solvent-soluble Fluoropolymer
- MEGAFLON from PPG offering colors and treatments you won't find elsewhere
- Custom Colors with Lumiflon

JOINT DESIGN

- Route and Return Dry Gasket System
- Joint Filler to be Panel Material
- Extruded Dry Joint (Free of Silicone Sealants)

SECTION 07410
ALUMINUM COMPOSITE PANELS

PART 1 – GENERAL

1.01 SUMMARY

- A. Section Includes
 - 1. Preformed, pre-finished, composite panels ALPOLIC®
 - 2. Route and Return 1 3/4" System Depth
- B. Related Sections

Note to Specifier: Select appropriate Sections below or add other related Section.

- 1. Section 05120 – Structural Steel
- 2. Section 06100 – Rough Carpentry
- 3. Section 07920 – Joint Sealants

1.02 REFERENCES

- A. Aluminum Association (AA)
 - 1. AA-C22-A41: Clear Coatings
 - 2. AA-C22-A42: Integral Color Coatings
- B. American Society for Testing and Materials (ASTM)
 - 1. ASTM B137: Test Method for Measurement of Coating Mass Per Unit Area of Anodically Coated Aluminum
 - 2. ASTM B209: Specification for Aluminum and Aluminum-Alloy Sheet and Plate

1.03 SUBMITTALS

Note to Specifier: Revise Section number in paragraph below as appropriate

- A. Submit the following in accordance with Section 01330 [Other]:
 - 1. Product Data: Manufacturer's product literature for the panel specified
 - 2. Shop Drawings: Indicate thickness of Panel Material and detail joint locations; including joints necessary to accommodate thermal movement if enough joints are not drawn.
 - 3. Samples
 - a. Samples of each finish and color or colors selected

1.04 QUALITY ASSURANCE

- A. Manufacturer Qualifications: Minimum of 5 years of experience in manufacturing panels similar to those specified
- B. Installer Qualifications: Acceptable to panel manufacturer

1.05 DELIVERY, STORAGE, AND HANDLING

- A. Deliver materials to the project site in manufacturer's original crating, with each panel properly labeled per installation purposes. Handle materials carefully to avoid damage to panels and finishes.

1.06 WARRANTY

- A. The manufacturer shall warrant the materials to be free of faults and that the warranty shall be extended by paint manufacturer's standard multi-year finish warranty.

PART 2 – PRODUCTS

2.01 MANUFACTURER

- A. TFC Canopy a division of Centurion Industries Inc.
1107 N Taylor Road, Garrett, IN 46793
Ph: 800-832-3212

2.02 PANEL TYPE

- A. ALPOLIC®

2.03 MATERIALS AND FABRICATION

- A. Composite Panel: Extruded thermoplastic core faced with 2 sheets of ASTM B209 .020 inch thick aluminum

Note to Specifier: Select the thickness in subparagraph below for composite panel.

1. Thickness: [3-mm] [4-mm] [6-mm]
- B. Tolerances
 1. Panel lines, angles, and breaks shall be sharp and true, and free from defects or open areas.

2.04 ACCESSORIES

- A. Clip Angles / Male to Female Extrusions: 1/8-inch thick aluminum
- B. Joint Areas to be [3-mm] [4-mm] [6-mm] panel material
- C. Fasteners: As recommended by TFC Canopy.

2.05 FINISHES

Note to Specifier: Select paragraphs A and B below for finish type.

- A. Solvent-soluble Fluoropolymer
- B. MEGAFLON®

Note to Specifier: Custom colors are available but are subject to an additional charge and quantity; Contact manufacturer for details.

1. Color: Selected by Architect from manufacturer's standard colors

Note to Specifier: Verify number of coats with manufacturer, dependent on color selection

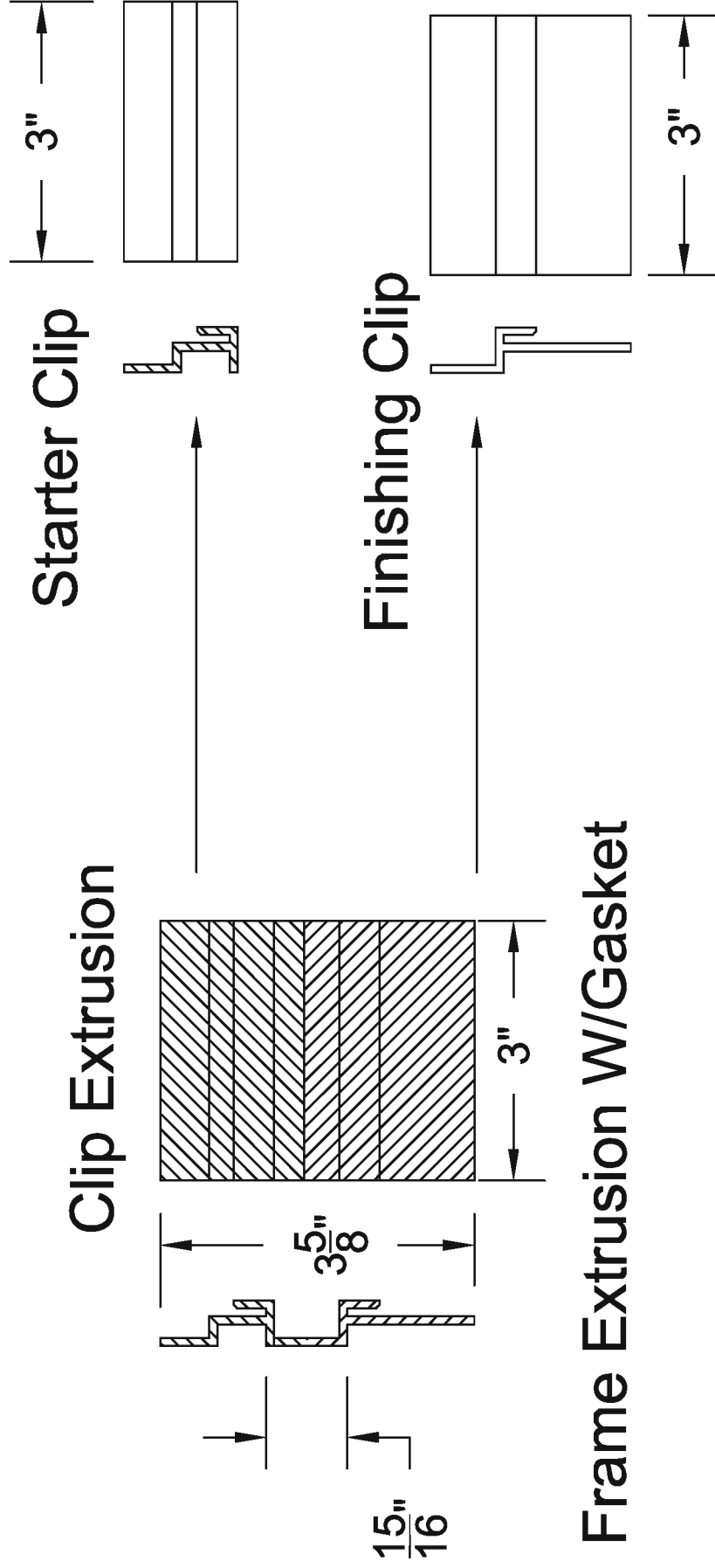
2. Number of Coats: [2-coat] [3-coat] [4-coat]
3. Provide factory applied strippable plastic film for protection during fabrication and installation.

END OF SECTION

1/2" Extrusion Assembly

TFC Part #EXT 107

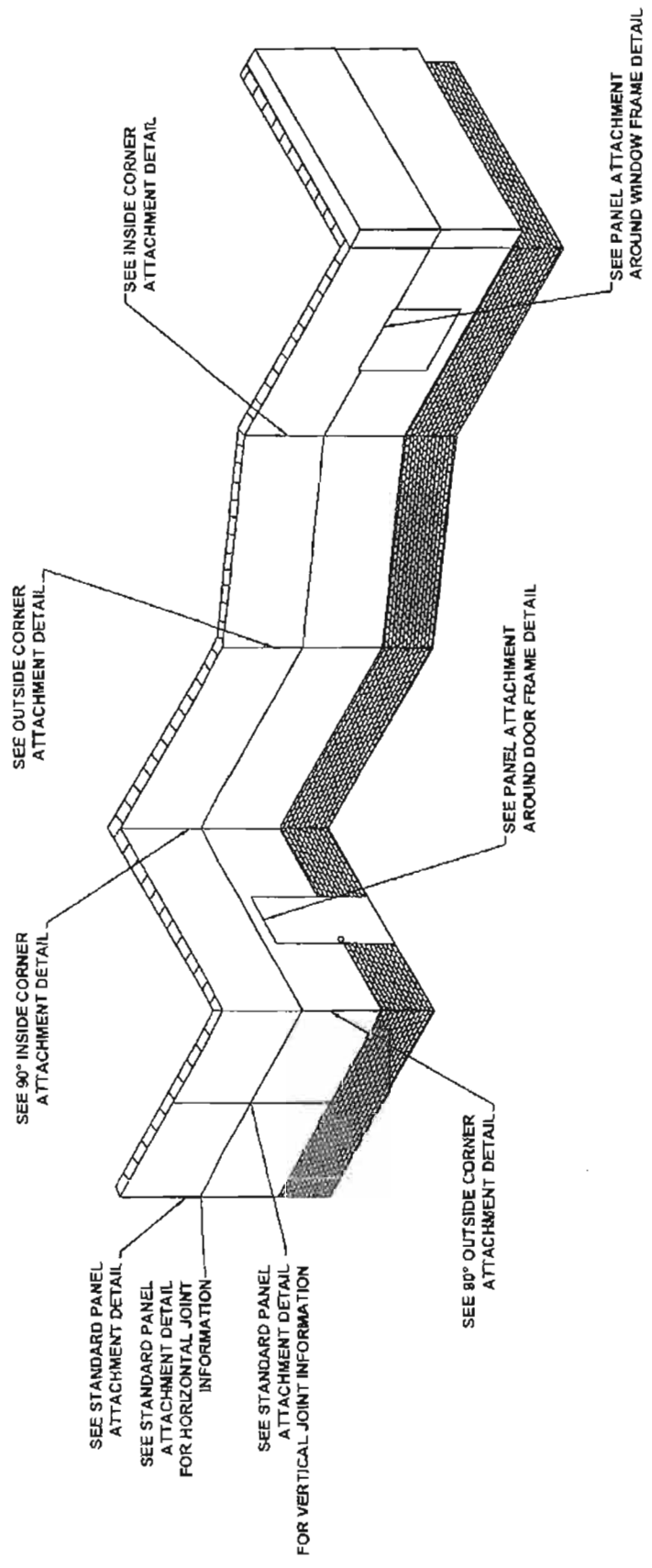
(Bestworth #31438)



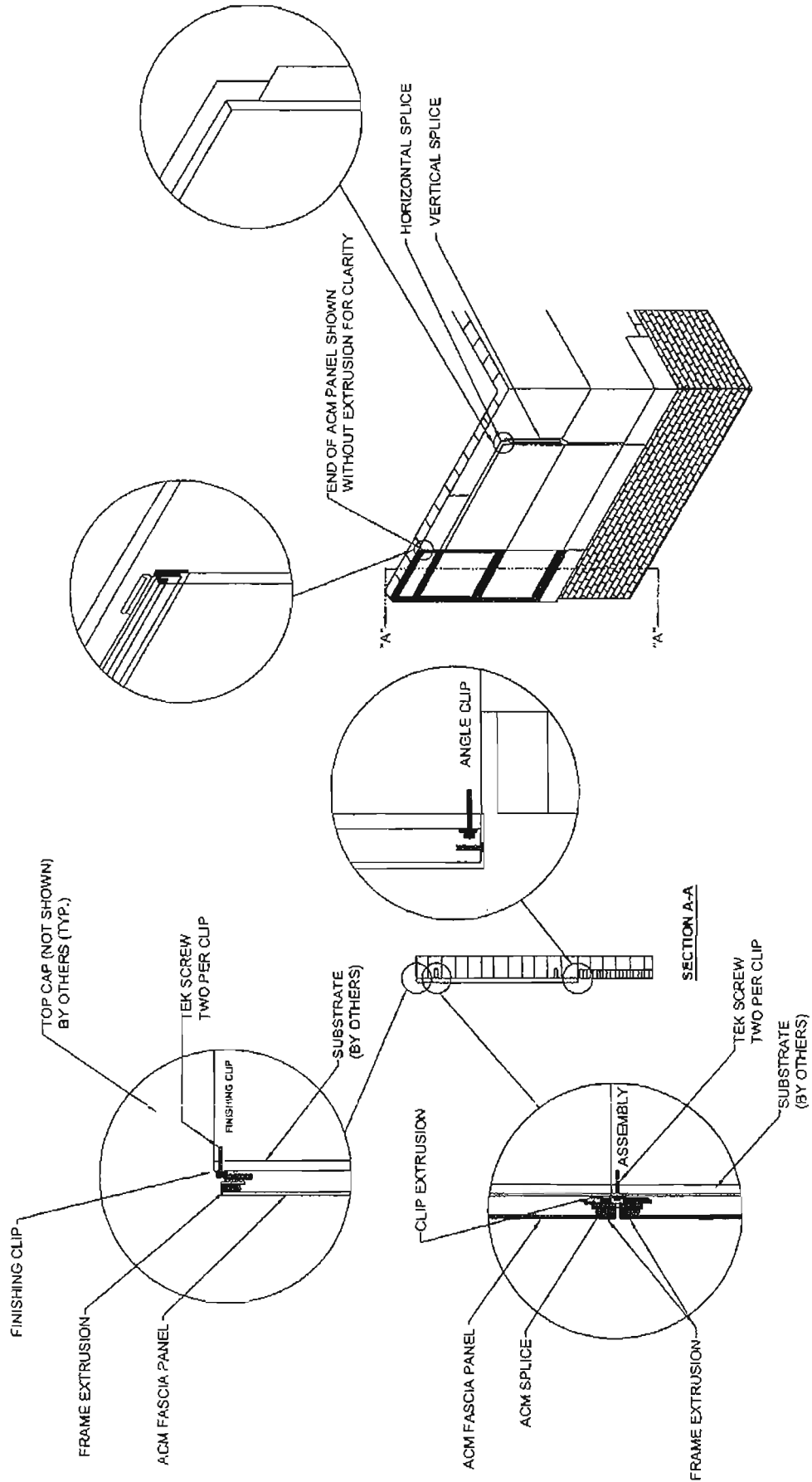
Frame Extrusion W/Gasket



TFC SERIES 2100 - DRY GASKET SYSTEM



TFC SERIES 2100 - Dry Gasket System

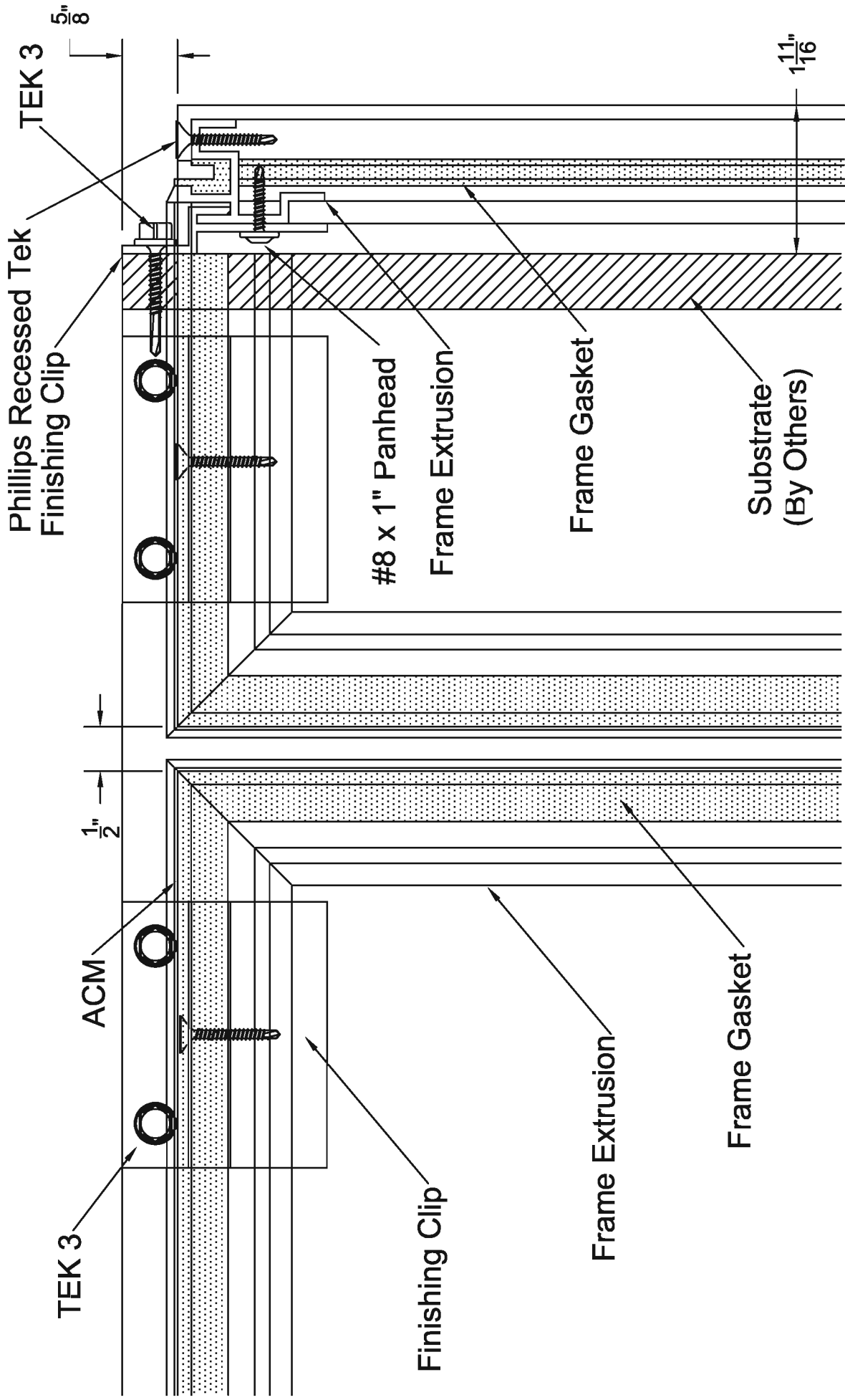


STANDARD PANEL ATTACHMENT



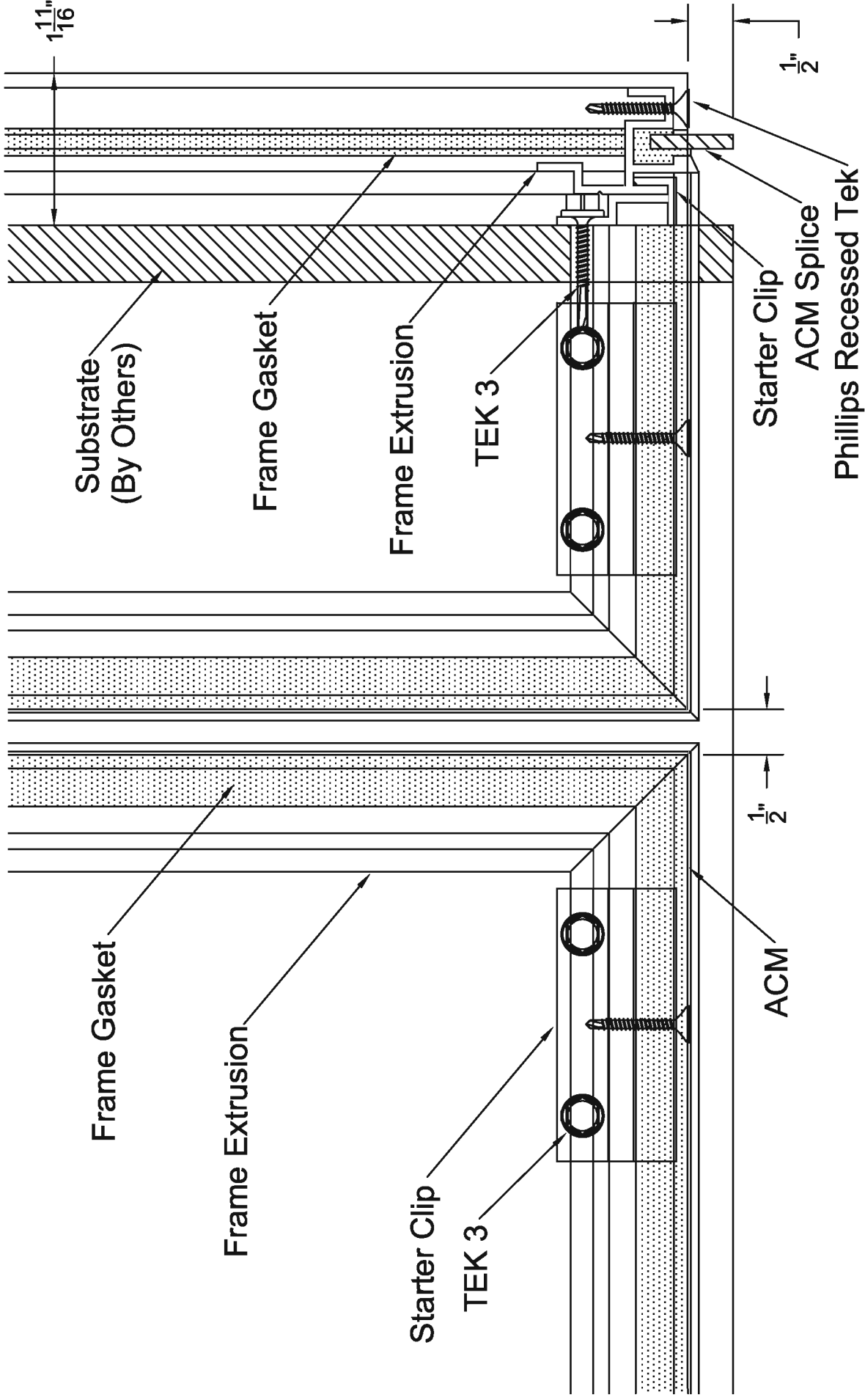
TFC SERIES 2100 - Dry Gasket System

4mm ACM ASSEMBLY WITH 1/2" EXTRUSION SYSTEM



TFC SERIES 2100 - DRY GASKET SYSTEM

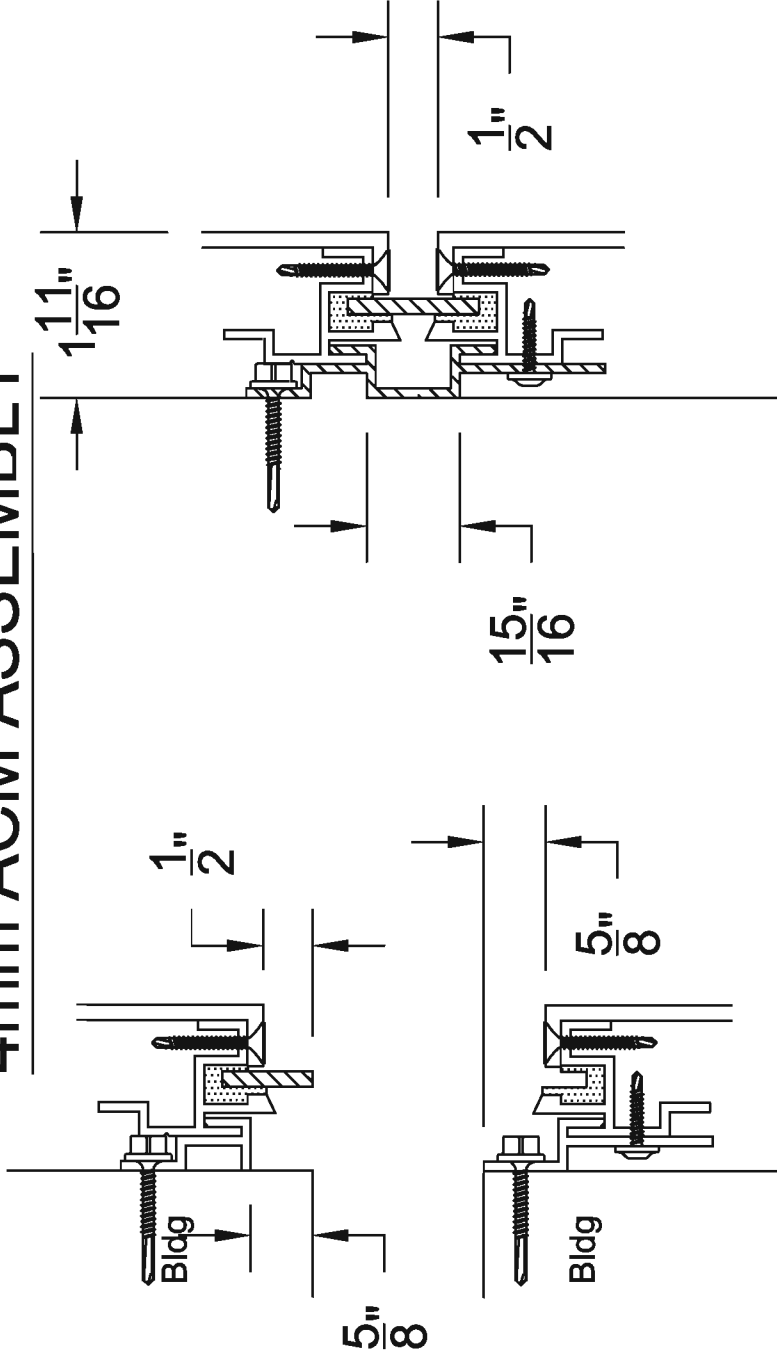
4mm ACM ASSEMBLY WITH 1/2" EXTRUSION SYSTEM



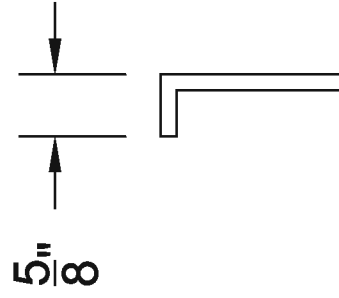
TFC SERIES 2100 - DRY GASKET SYSTEM

1/2" Extrusion Assembly

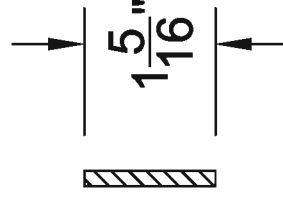
4mm ACM ASSEMBLY



4mm Return Leg



4mm Splice



TFC SERIES 2100 - DRY GASKET SYSTEM