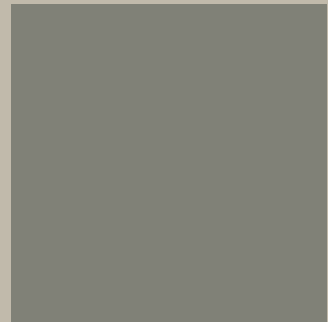
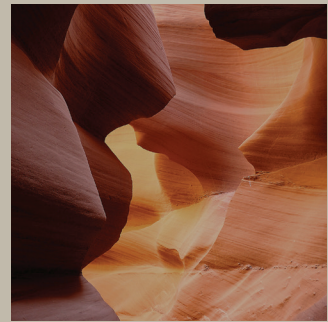


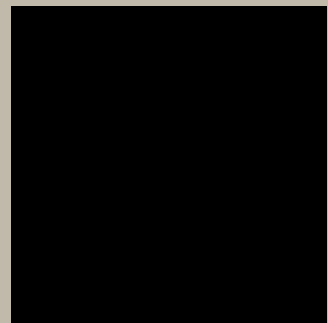
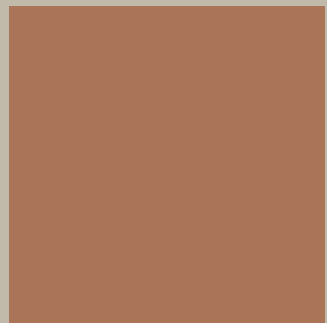
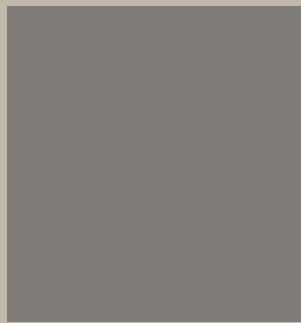


WE UNDERSTAND
INSPIRATIONAL



Our Matte Series was inspired by Mother Nature's color palette. Now the stunning colors found in the natural world can breathe new life into your next project. One of the world's leading manufacturers of brilliant, shining colors is bringing its expertise to matte finishes.

We're inspired. Now it's your turn.



BUILD YOURS WITH ALPOLIC® COLORS AND FINISHES

ALPOLIC®
M A T E R I A L S

Let's Build

ALPOLIC®

Nature was our inspiration.
Now let the new Matte Series finishes be yours.
Find the perfect finish for your next concept.



River Rock Grey

Color Code: RRM

Gloss: Matte/6

LRV: 23/SRI: 17

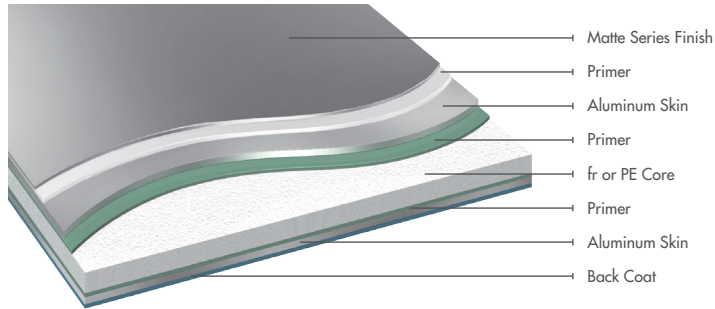


Clay Red

Color Code: CLM

Gloss: Matte/6

LRV: 17/SRI: 16

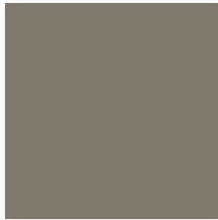


Limestone Blue

Color Code: LBM

Gloss: Matte/6

LRV: 17/SRI: 12



Olive Green

Color Code: OGM

Gloss: Matte/6

LRV: 20/SRI: 14

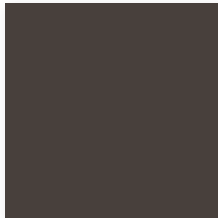


Terra Cotta

Color Code: TRM

Gloss: Matte/6

LRV: 16.9

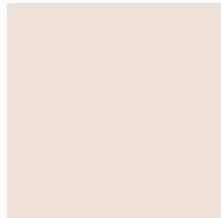


Slate Black

Color Code: BSM

Gloss: Matte/6

LRV: 5/SRI: 1



Cloud White

Color Code: CWM

Gloss: Matte/6

LRV: 73/SRI: 81

ALPOLIC® materials are light, flat, rigid and strong. Let's build.

With continuous coil coating using our advanced die coating process, ALPOLIC® materials provide a consistent and smooth finish of high-performance fluoropolymer resins – the most advanced architectural coatings available. Our new Matte Series not only honors Mother Nature herself, but is made to withstand the test of time providing a more beautiful finish than traditional metal or other building panels. Choose from our ALPOLIC®/PE with our classic polyethylene core (PE) or our ALPOLIC®/fr panels featuring an advanced fire-retardant (fr) thermoplastic core that sets the industry standard for fire safety and meets many fire codes worldwide.

Note:

- All colors herein are fluoropolymer coatings produced in our continuous coil coating line.
- Minimum quantity required for the colors herein is 1000 sq. ft. or 93 m² per order per standard width.
- Custom colors are also available. Please consult our offices or our distributors for the minimum quantities.
- Color chips may slightly differ from actual products due to printing. Confirm the color with the color samples.
- Colors may slightly vary between production lots. To ensure the color consistency, we recommend placing total requirement in one order.

Nota:

- Todas as cores aqui indicadas são revestimentos antiaderentes produzidos em nossa linha de revestimento de bobina contínuo.
- A quantidade mínima exigida para as cores aqui indicadas é de 1000 pés quadrados ou 93 m² por pedido e por largura padrão.
- Cores personalizadas também estão disponíveis. Por favor, consulte nossos escritórios ou distribuidores para as quantidades mínimas.
- Os "chips" de cores podem ser ligeiramente diferentes do produto atual, devido à impressão. Confirmar a cor com as amostras de cores.
- As cores podem variar ligeiramente entre os lotes. Para garantir a consistência de cor, recomendamos efetuar o total do pedido que será necessário de uma só vez.

Nota:

- Todos los colores de esta tabla corresponden a pinturas de fluoropolímero aplicadas en nuestra cadena de pintura continua de chapa en rollo.
- La cantidad mínima de los colores de esta tabla es de 1000 sq. ft. or 93 m² por fin por anchura estándar. Por favor, consulte nuestras oficinas o nuestros distribuidores para el ancho del panel disponible.
- También existen colores personalizados.
- Las tarjetas de color pueden diferir ligeramente de los productos reales debido al proceso de impresión. Confirme el color con la muestra de color.
- Los colores pueden variar ligeramente de un lote de producción a otro. Para garantizar una consistencia en el color recomendamos que el total del requerimiento de la orden se realice en una misma producción.

Remarques:

- Toutes les couleurs offertes sont des revêtements fluoropolymère à produits dans notre ligne de revêtement par couchage en continu.
- La quantité minimale requise par commande pour les couleurs offertes ici est de 1000 sq. ft. or 93 m² par largeur de panneau standard. Pour tout renseignement sur les largeurs de panneaux disponibles veuillez nous consulter ou consulter nos distributeurs.
- Des couleurs personnalisées sont également disponibles.
- Les pastilles de couleur peuvent varier légèrement des produits proprement dits du fait de l'impression. Merci de confirmer la couleur avec l'échantillon de couleur.
- La couleur peut varier légèrement en fonction des lots de production. Pour garantir l'homogénéité des teintes nous recommandons de passer une seule commande pour l'ensemble de vos besoins.

**Mitsubishi Chemical Composites America, Inc.
ALPOLIC Division**

401 Volvo Parkway, Chesapeake, VA 23320, U.S.A.

Telephone: 800-422-7270 (from US and Canada)

Facsimile: 1-757-436-1896

Email: info@alpolic.com

URL: <http://www.alpolic-americas.com>

All colors herein are Fluoropon® PVDF, a premium fluoropolymer system containing 70% Polyvinylidene Fluoride (PVDF) proprietary resins providing outstanding resistance to ultraviolet rays, exceptional color retention and resistance to chalking and chemical degradation.

The LRV (Light Reflectance Value) noted represents a percentage of the light energy, in the visible spectrum, that is reflected by the

surface being measured. This value is defined in ASTM C609 as the Y value as measured in an XYZ/Yzy color space.

The SRI (Solar Reflectance Index) noted represents the material's solar reflectivity and emissivity. This value is measured using ASTM E1980 at a 12 W/m²K value.

Colors shown are as close to actual colors as allowed by the printing process.

Mitsubishi Chemical Composites America, Inc. reserves the right to change or delete information herein without prior notice. The transcription of any data or information contained in this brochure without prior written consent is strictly prohibited. For warranty details, exclusions and limitations or for more information please contact your ALPOLIC® Representative.