



# ALPOLIC<sup>®</sup>

METAL COMPOSITE MATERIALS

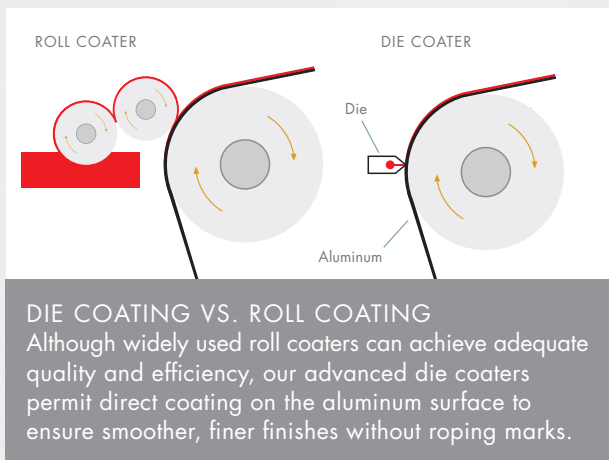
Your Design | **Perfected**

## STOCK **COLOR** CHART

## Choose the Highest Standard of Quality, Durability and Beauty

**HIGH-PERFORMANCE FLUOROPOLYMER RESINS –** Our Lumiflon® FEVE and Kynar® PVDF resins are the most advanced architectural coatings available, meeting or exceeding AAMA 2605 specifications to deliver superior durability, weatherability and chemical resistance. Choose Lumiflon® FEVE for the broadest color palette with a gloss range from satin to high luster. This remarkable finish can also be touched up with an air-dry system.

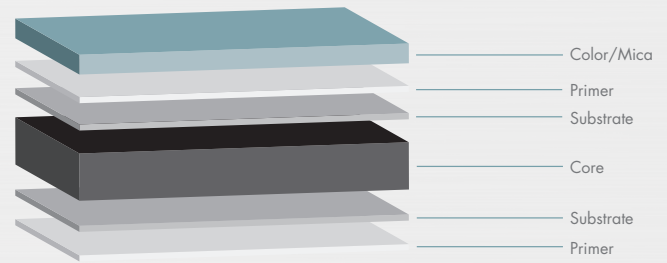
**SHORT RUN CAPABILITIES –** With our advanced die coating process and controlled curing, we can coil coat as little as 1,000 square feet of material in a broad choice of colors. You can count on the same color consistency, quality and lengthy warranty we offer for the largest orders. Gain practically unlimited design flexibility, thanks to our ability to deliver short runs of custom colors in your choice of 40-, 50- or 62-inch widths.



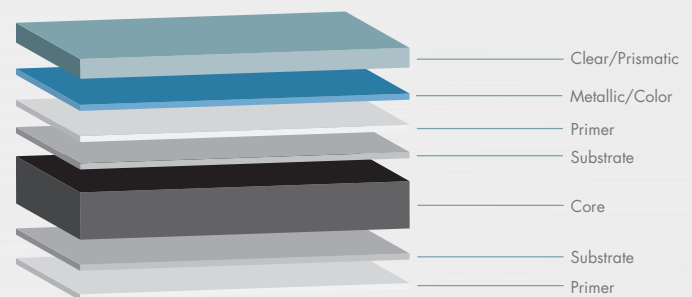
**GLOSS RANGE –** Different gloss levels can significantly change the eye's perception of color. If you would like a different gloss level than the sample you submit for color matching, let us know. We will work with you directly to ensure the gloss level you want is achieved.

**FINISH DIRECTIONALITY –** For best color consistency, maintain the same directionality throughout design, estimation, fabrication and construction. We recommend ordering finishes for your entire job at one time, from one lot of material.

## 2 Coat Solid/Mica



## 3 Coat Metallic/Prismatic



**LIGHT REFLECTANCE VALUE –** LRV numbers indicate the percentage of visible light reflected by the surface. This value is defined in ASTM C609 as the Y value in an XYZ/Yxy color space. While the LRV values shown on this chart are typical, there can be slight variations between individual lots.

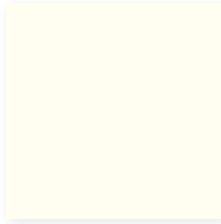
**SOLAR REFLECTANCE INDEX –** SRI numbers, as defined by ASTM E1980 using 12 W/m<sup>2</sup>K values, indicate the material's reflectivity (how well it reflects back instead of absorbing radiant energy) and emissivity (how well it radiates absorbed heat back into the environment). The Cool Roof Rating Council (CRRCC) requires an SRI value of 29 or greater for steep-slope roofs to earn a "Cool" rating. Most of our Architectural stock colors meet this requirement, and we have added "Cool" after the SRI value for easy reference.

For expert assistance with product availability, material selection, sizing and colors, please contact your local ALPOLIC® sales office.

## 30 Year Finish Warranty Stock Colors

Stocked in 4mm thick panels

### SOLID



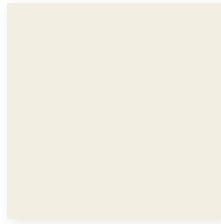
**Bone White**

4-BNT-30  
LRV 78.50/SRI 82-Cool



**Oyster**

4-CRT-30  
LRV 72.46/SRI 82-Cool



**Mist White**

4-MST-30  
LRV 69.96/SRI 75-Cool



**Aluminum Grey**

4-AGT-30  
LRV 31.60/SRI 26



**BGY Grey**

4-BGY-50  
LRV 10.41/SRI 7



**Bronze**

4-JBR-30  
LRV 3.34/SRI 2



**TOB Black**

4-TOB-15  
LRV 1.01/SRI 0

### MICA



**Mica Platinum**

4-OPT-50  
LRV 30.88/SRI 53-Cool



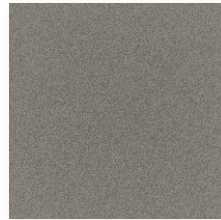
**Mica Anodic Clear**

4-MNC-30  
LRV 34.43/SRI 56-Cool



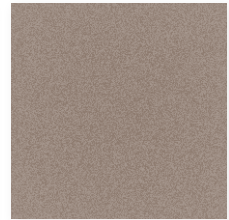
**Mica Champagne**

4-MCU-30  
LRV 22.61/SRI 38-Cool



**Mica Grey**

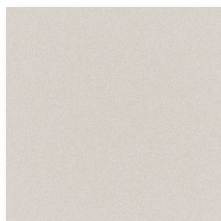
4-MZG-50  
LRV 7.95/SRI 14



**Mica MFS Grey**

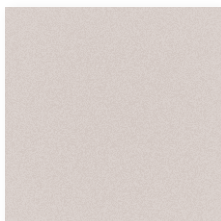
4-MFS-30  
LRV 13.41

### METALLIC



**BSX Silver Metallic**

4-BSX-30  
LRV 30.94/SRI 71-Cool



**Silver Metallic**

4-SMX-30  
LRV 36.59/SRI 63-Cool



**Champagne Metallic**

4-CMX-30  
LRV 31.19/SRI 59-Cool



**Medium Bronze Metallic**

4-MBX-30  
LRV 31.20/SRI 40-Cool



**Dark Copper Metallic**

4-DCX-30  
LRV 15.09/SRI 47-Cool

Order samples at [www.alpolic-americas.com/samples](http://www.alpolic-americas.com/samples)

## 20 Year Finish Warranty Stock Colors

Stocked in 4mm unless otherwise stated

### SOLID



**BBR Red**  
4-BBR-30  
LRV 8.06  
3&4mm



**BTR Red**  
4-BTR-50  
LRV 11.57  
3&4mm



**TOR Red**  
4-TOR-70  
LRV 9.06



**JLR Red**  
4-JLR-50  
LRV 5.44



**JXR Red**  
4-JXR-30  
LRV 10.50



**TRC Red**  
4-TRC-30  
LRV 8.52



**AUB Blue**  
4-AUB-50  
LRV 3.25



**CVB Blue**  
4-CVB-70  
LRV 13.79



**HNB Blue**  
4-HNB-50  
LRV 16.78



**RTB Blue**  
4-RTB-60  
LRV 9.06



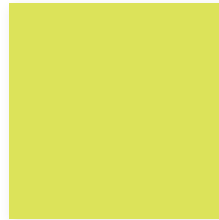
**MBU Blue**  
4-MBU-30  
LRV 10.59



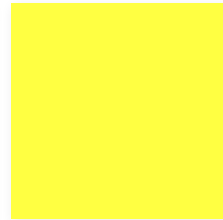
**HYB Blue**  
4-HYB-30  
LRV 4.20



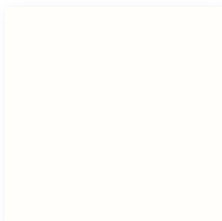
**ABE Blue**  
4-ABE-70  
LRV 23.73



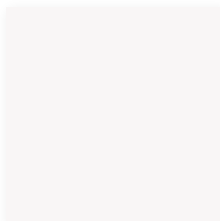
**AYW Yellow**  
4-AYW-70  
LRV 61.77



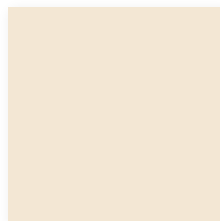
**HYE Yellow**  
4-HYE-50  
LRV 62.5



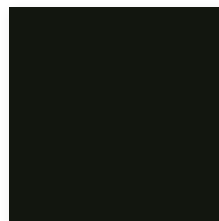
**RVW White**  
4-RVW-50  
LRV 86.34



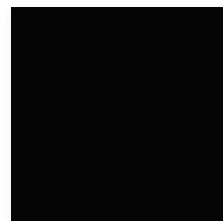
**HWH White**  
4-HWH-50  
LRV 80.8



**COW White**  
4-COW-30  
LRV 68.67



**BLX Black**  
4-BLX-30  
LRV 0.89  
3&4mm



**TBL Black**  
4-TBL-70  
LRV 0.75  
3&4mm

### SOLID



**CVG Grey**  
4-CVG-50  
LRV 14.38  
3&4mm

### METALLIC



**PEX Pewter Metallic**  
4-PEX-30  
LRV 20.63



**TSZ Silver Metallic**  
4-TSZ-70  
LRV 32.00



**TBX Silver Metallic**  
4-TBX-30  
LRV 38.75  
3&4mm

# 10 Year Finish Warranty Stock Colors

Stocked in 3mm thick panels

## SOLID



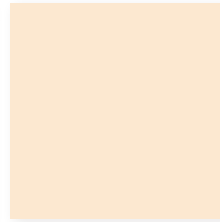
**STR Red**  
3-STR-70  
LRV 12.55



**TRD Red**  
3-TRD-70  
LRV 10.26



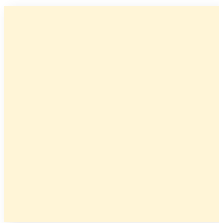
**FEF Red**  
3-FEF-70  
LRV 11.64



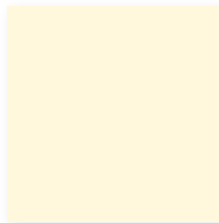
**BPS Pearl**  
3-BPS-30  
LRV 68.79



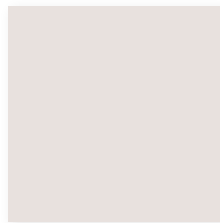
**ETT Tan**  
3-ETT-30  
LRV 47.87



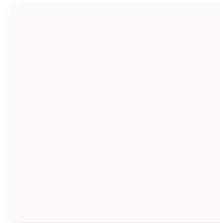
**CRY Oyster**  
3-CRY-50  
LRV 72.30



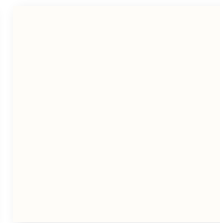
**CTW White**  
3-CTW-30  
LRV 76.42



**MCV White**  
3-MCV-70  
LRV 68.21



**SAW White**  
3-SAW-70  
LRV 80.62



**EWH White**  
3-EWH-70  
LRV 90.01



**DYB Blue**  
3-DYB-50  
LRV 10.06



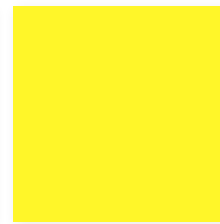
**CFB Blue**  
3-CFB-70  
LRV 7.24



**SHB Blue**  
3-SHB-70  
LRV 4.12



**BGN Green**  
3-BGN-50  
LRV 14.39



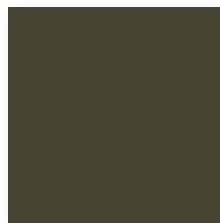
**BYL Yellow**  
3-BYL-50  
LRV 65.93



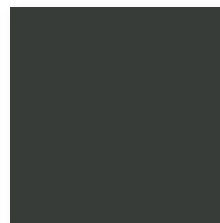
**EYL Yellow**  
3-EYL-30  
LRV 48.05



**YLW Yellow**  
3-YLW-50  
LRV 49.88



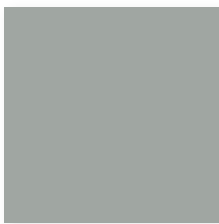
**SBR Bronze**  
3-SBR-30  
LRV 6.32



**CNC Charcoal**  
3-CNC-30  
LRV 4.20



**SOG Grey**  
3-SOG-70  
LRV 49.50



**TXG Grey**  
3-TXG-70  
LRV 40.69

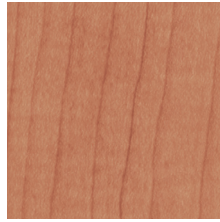
## Specialty Stock Colors/Finishes

STONE SERIES | 20 Year Finish Warranty



**Black Granite**  
4-LBG-70  
LRV N/A

TIMBER SERIES | 20 Year Finish Warranty



**Maple**  
4-MPL-30  
LRV N/A



**Walnut**  
4-WLN-30  
LRV N/A



**Mahogany**  
4-QAE-30  
LRV N/A

PRISMATIC



**MRT Prismatic Magma**  
10 Year Finish Warranty  
3-MRT-70  
LRV 11.33



**DQO Pearlescent Orange**  
10 Year Finish Warranty  
3-DQO-70  
LRV 22.21

DECORATIVE

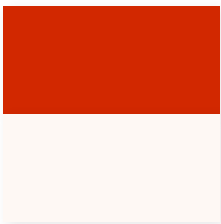


**HPA High Polished Aluminum**  
5 Year Finish Warranty  
3-HPA-70  
LRV 0.88

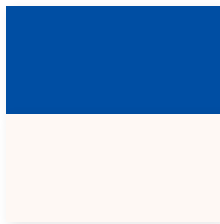


**HLZ Hairline Aluminum**  
10 Year Finish Warranty  
4-HLZ-70  
LRV 16.32

MULTI-COLOR



**Red/White**  
10 Year Finish Warranty  
3-209-70  
LRV 11.64/SRI 80.90



**Blue/White**  
10 Year Finish Warranty  
3-207-70  
LRV 8.00/SRI 81.04



**Yellow/White**  
10 Year Finish Warranty  
3-234/238-35  
LRV 48.05/SRI 90.01

## Architectural Premium Stock Finishes

Call ALPOLIC® Customer Service for Warranty Details 800.422.7270

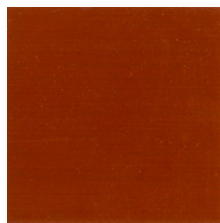
NATURAL METALS



**Stainless**  
4-4HL  
LRV 21.84/SRI 34-Cool

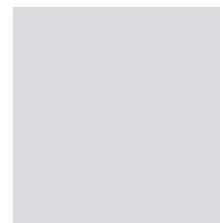


**Zinc**  
4-AZZ  
LRV 21.51/SRI 0



**Copper**  
4-C12  
LRV 5.03/SRI 55-Cool

ANODIZED



**Clear**  
4-CLR  
LRV 34.31/SRI 84-Cool

Order samples at [www.alpolic-americas.com/samples](http://www.alpolic-americas.com/samples)

# Choose ALPOLIC® performance to make your project practical and durable. Choose ALPOLIC® finishes and colors to make it truly remarkable.

*We offer an extensive selection of rich, vibrant colors and styles for both painted and natural metal surfaces, working with you to bring your design intent to reality. Rigid, lightweight panels that fulfill your vision with a finish of enduring quality – that's the beauty of ALPOLIC® materials.*

Browse our offerings, and let us bring your vision to life

---

## Architectural Stock Finishes and Colors

**STOCK** painted colors are available on 4mm-thick panels, with many of the most popular choices stocked in a selection of widths and lengths. Specify a polyethylene (PE) or fire-resistant (fr) core – typically required by fire codes when building over 40 feet. Then choose a fluoropolymer paint finish offered in a variety of solid colors, metallics and micas. These panels are manufactured to architectural standards and stocked for immediate shipment.

**ANODIZED** panels are manufactured with 1100 alloy aluminum. They are available in both 50- and 62-inch widths with a stock clear anodized Class 1 finish or a choice of five custom Class 1 colors.

**NATURAL METALS** offer a traditional look in a state-of-the-art panel system. These 4mm panels offer your choice of metal surface while retaining the flatness and workability of aluminum composite.

---

## Corporate Identity - Stock Program Colors

**PROGRAM** or 10 year finish warranty colors are stocked in the standard options shown here, or can be custom-created for your unique project. We use the advanced Lumiflon® FEVE fluoropolymer resin in two or three coats, or the Kynar® PVDF coating system to create a vivid, extremely durable finish in an astounding range of colors and glosses, including metallic and mica options. Panels are stocked in either 3mm or 4mm thickness.

## Specialty Stock Colors and Finishes

**STONE/TIMBER SERIES** finishes are produced using our proprietary image-transfer process in concert with Lumiflon® FEVE fluoropolymer coatings, providing exceptional protection with the classic beauty of stone or timber. We stock standard 62-inch panels for your immediate needs.

**PRISMATIC** finishes combine Lumiflon® FEVE fluoropolymer technology with specialized pigments to create unique colors and effects. The resulting finishes can make the surface glisten or even change colors with different lighting or the movement of the sun. Consult our Prismatic brochure to find the perfect color, gloss and effect for your design.

**DECORATIVE** panels use specially treated aluminum surfaces with crystal-clear coats of Lumiflon® FEVE resin to protect the panels and maintain a pristine look, even in harsh exterior applications. HPA offers a polished shine, while HLZ has the look of brushed stainless steel.

**MULTI-COLOR** panels incorporate an advanced coating process engineered by ALPOLIC® to accommodate almost any color scheme. From bright and glossy to muted and subtle, these rich and versatile color systems can only be accomplished by combining Lumiflon® FEVE technology with our advanced die coil coating system. We can work with you to help you choose the perfect look to convey your message.

**CUSTOM COLORS** – Bright, clean high-gloss colors, rich metallics, low-gloss earth tones, prismatic special effects and more: If you can imagine a color, we can make it real. Contact customer service to connect with our color experts.

---



Lumiflon® FEVE, a remarkable second-generation fluoropolymer coating, meets the weatherability and chemical-resistance standards you would expect from PVDF finishes, but delivers unprecedented design and performance advantages – a rich palette of vivid colors, a full gloss range, excellent adhesion, recoatability and even ambient cure capabilities.

	<b>FEVE/Lumiflon®</b>	<b>PVDF/Kynar®</b>
<b>Durability</b>	Meets AAMA 2605	Meets AAMA 2605
<b>Color Range</b>	Bright to Muted	Muted Only
<b>Color Retention</b>	Excellent	Excellent
<b>Gloss Range</b>	10–70	10–40
<b>Gloss Retention</b>	Excellent	Excellent
<b>Chalking Resistance</b>	Excellent	Excellent
<b>Field Touch-Up</b>	Excellent	Poor
<b>Marring Resistance</b>	Excellent	Good

For additional information, samples or a list of ALPOLIC® fabricators, please call 1-800-422-7270 or visit [www.alpolic-americas.com](http://www.alpolic-americas.com).

**ALPOLIC®**  
METAL COMPOSITE MATERIALS

 **MITSUBISHI CHEMICAL COMPOSITES AMERICA, INC.**

401 Volvo Parkway, Chesapeake, VA 23320  
Telephone: 800-422-7270 | Facsimile: 757-436-1896  
[www.alpolic-americas.com](http://www.alpolic-americas.com) | e-mail: [info@alpolic.com](mailto:info@alpolic.com)

Mitsubishi Chemical Composites America, Inc. reserves the right to change or delete information herein without prior notice.

©2018 Mitsubishi Chemical Composites America, Inc. All rights reserved. ALPOLIC® is a registered trademark of Mitsubishi Chemical Corporation. Lumiflon® is a registered trademark of Asahi Glass Company. Kynar® is a registered trademark of Arkema, Inc.

LITAP3000 Rev.18   
MAY 2018



A Group Company of  
 **MITSUBISHI CHEMICAL**